



SMARTBLOC®

- Smarter
- Cheaper
- Faster



AS EASY AS LEGO

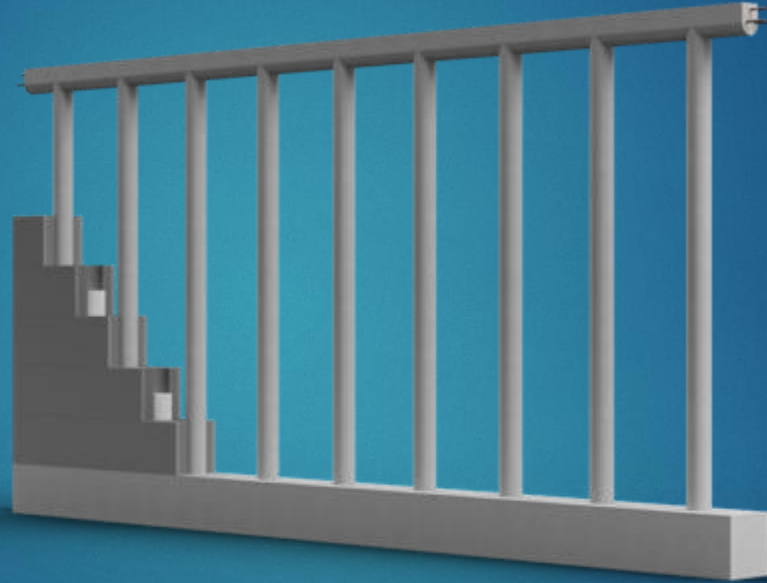
What is SMARTBLOC?

TECHNOLOGY

MATERIALS

THE SYSTEM

THE PRODUCT



Traditional column and beam structure

What is SMARTBLOC?

TECHNOLOGY

MATERIALS

THE SYSTEM

THE PRODUCT



Cement + expanded Polystyren

Well known, but in new combination

What is SMARTBLOC?

TECHNOLOGY

MATERIALS

THE SYSTEM

THE PRODUCT



Strength, quality, fire-resistant, insulation, diffusion open
Shorter construction time - unskilled labor - few components

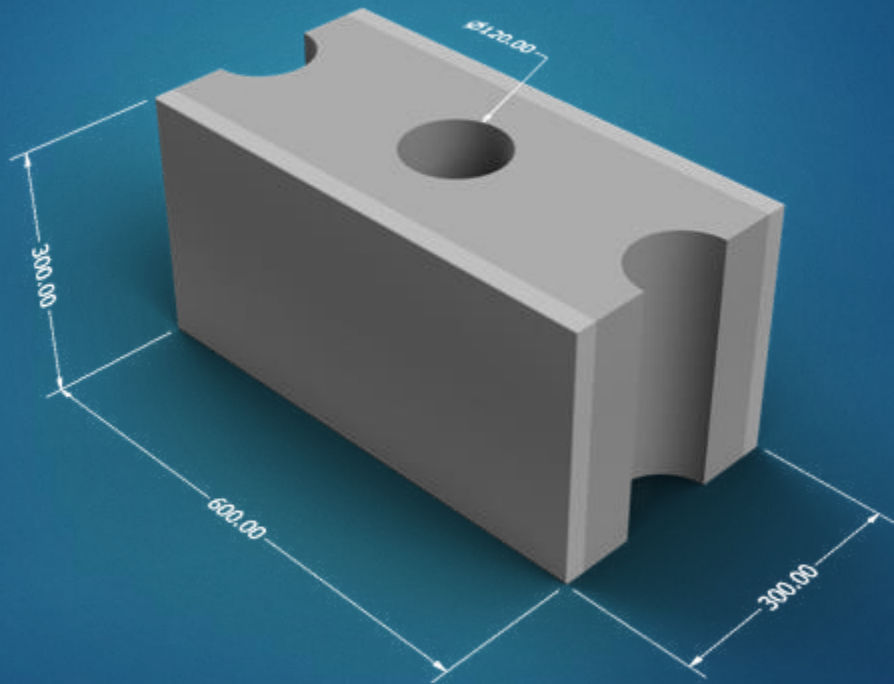
SMARTBLOC 
www.smartbloc.no

SMARTBLOC – SYSTEM I

N-BLOC

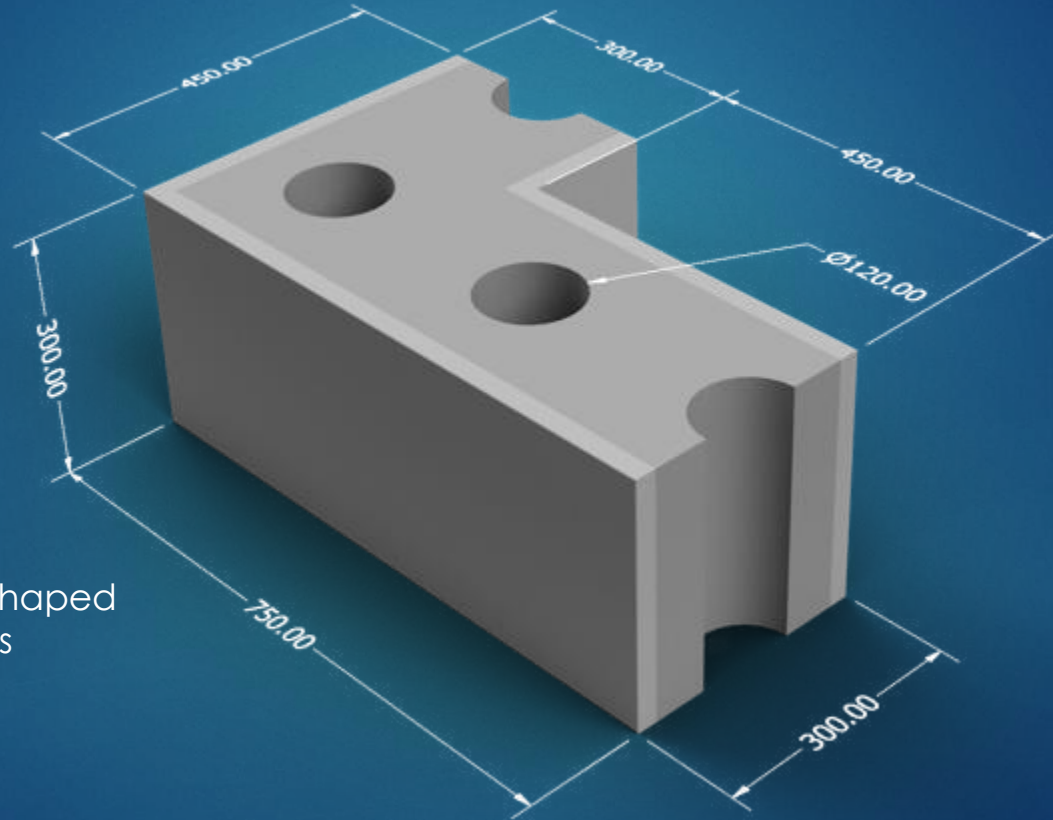
(Standard Block)

Smartbloc consist of a hard and compact outer layer on both sides, with an insulating layer in the middle.



SMARTBLOC – SYSTEM I

L-BLOC

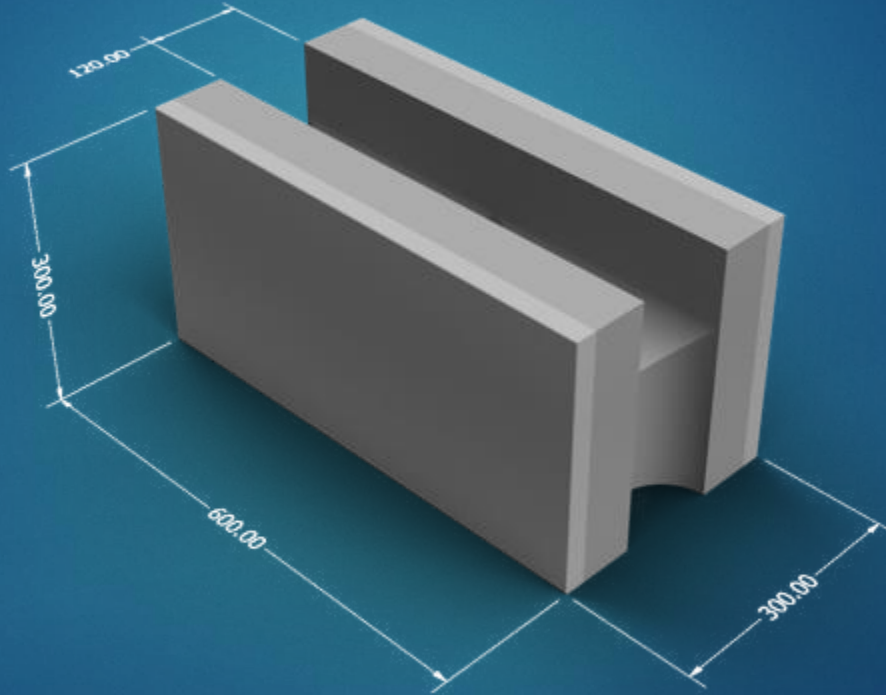


Corner blocks are L-shaped and walled with joints alternating without a cold bridge.

SMARTBLOC – SYSTEM I

U-BLOC

The U-blocks create a U-shaped channel which will have structural elements and be filled with concrete.



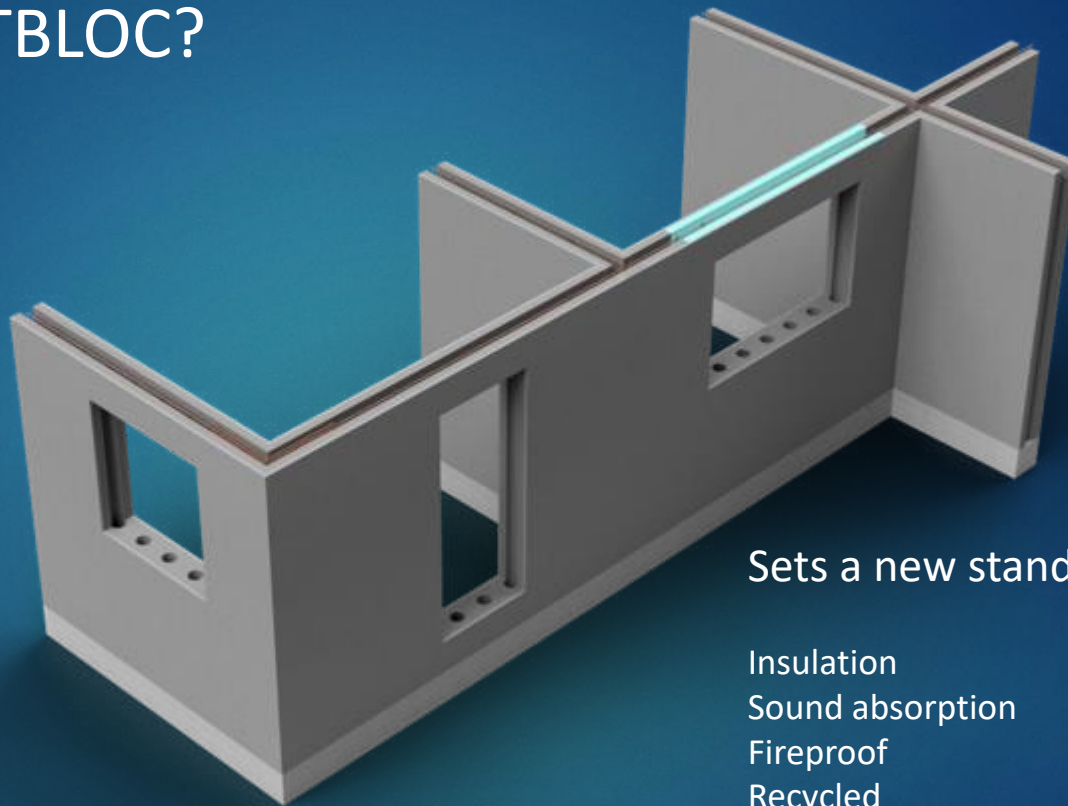
What is SMARTBLOC?

TECHNOLOGY

MATERIALS

THE SYSTEM

THE PRODUCT



Sets a new standard

Insulation
Sound absorption
Fireproof
Recycled
Environmentally friendly
Insulation
Strength
Weight

SMARTBLOC 
www.smartbloc.no

PATENTED, TESTED and VERIFIED

SINTEF 2008

From the Sintef lab in Trondheim. Tested for fire, strength and insulation:

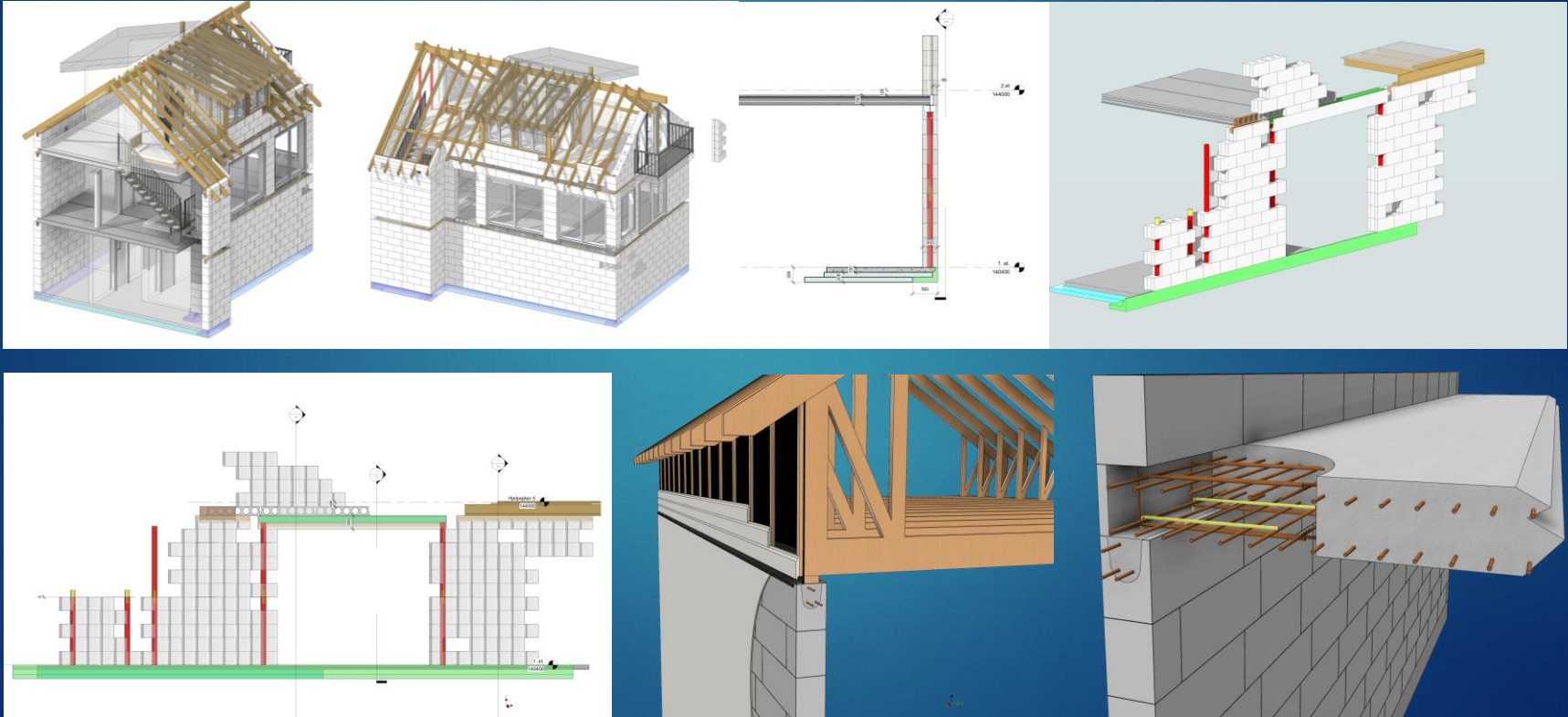
- Fire: B-s1, d0
Tested exposed without fiber plaster on hot / cold side
- Strength: 3 floors
- U-value: 0.18



NOTE: SINTEF is one of Europe's largest independent research organizations.

Statistics and technical solutions

Statics are prepared in accordance with local building regulations,
The examples below show suggestions for detailed solutions.



Why SMARTBLOC?

- SMARTBLOC is adapted to local building customs with regards to technical solutions and esthetics
- Fire-resistant
- Insulation requirements, design adapted to local requirements
- Low weight, can be built without heavy machinery
- Ordinary hand tools are used for customization
- Great flexibility with regards to type of building / heights
- Unskilled labor (easier to do right than wrong)
- Quick and easy blocking, approx. 2 -3 m² pr. hour finished walled, reinforced and filled with concrete
- Weather independent, can be blocked in sun, rain and cold
- Exterior / interior - Plastered with SMARTBLOC Fiber plaster, and if necessary, with cladding panels / blending.

BUILDING SITE

Why SMARTBLOC?

PRODUCTION

- Low start-up costs for local production
- Automated production with large capacity approx. 90,000 m² / pr. production line / shift / year
- Competitive price
- Raw materials easily available
- Few raw materials provide easy logistics
- Green profile when using recycled EPS
- Public return schemes in most industrialized countries
- Cold production, low energy requirements
- Heat development in the curing process can be used for heating office / administration facilities

References

Henning Tønnesen - Norges Eiendomsutvikling AS

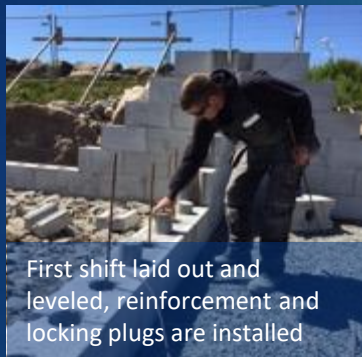


Building with SMARTBLOC is fantastic. The blocks are very simple and time-saving to build. Glue or mortar is not used either horizontally or vertically and blocking / masonry can therefore be carried out in both frost and rain. We also save a lot of time on the fact that all casting in load-bearing columns and U-blocks can be carried out in one operation. The end result is an incredibly strong fully insulated breathable wall. I can highly recommend SMARTBLOC building blocks and SMARTBLOC Fiber plaster. Absolutely among the best in the market and based on our positive experiences, we have chosen to become a dealer of SMARTBLOC.

SMARTBLOC 
www.smartbloc.no

Lista

Total 11 houses



Espevær on the ocean front

Restoration of a sea shed to holiday home. Knut Eide.



It's easy to make adjustments
when blocking



The blocks are very light and time-saving to build. The weight of the blocks and the few components to assemble the SMARTBLOC wall system were crucial to our situation since we have no road to the site. Everything was transported by light boat. It is very important to us that our CO2 footprint is as small as possible. We can do this with SMARTBLOC because it is a more complete wall system in relation to e.g. strength and insulation. Complete from one supplier meant that we saved the environment a lot of unnecessary logistics.

SMARTBLOC 
www.smartbloc.no

Røyrvik

Restaurant



Vertically divided housing



Building with 3 apartments



Apartment building



Sporting team club house



Isolated garage

Garage with parking deck on roof



Annex



SMARTBLOC System II

Blinded outside and inside





SMARTER

CHEAPER

FASTER

www.smartbloc.no